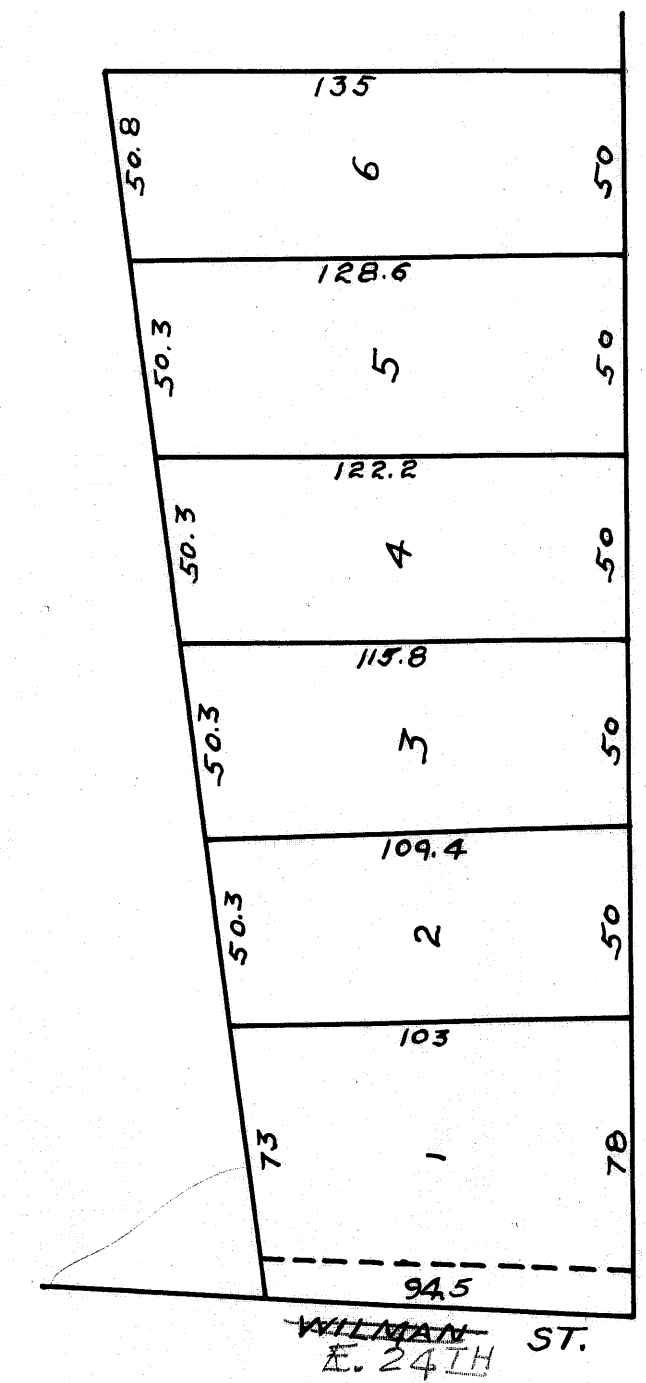


on business
11/16/28 WD



CRENSHAW ST.

~~WILMAN~~ ST.
E. 24TH

J.W. FULLER'S SUBDIVISION
 BRYAN, TEXAS
 D.R. 128 Pg. 157 12-28-'46
 Scale: 1" = 50'

40' R/W PER DEED BY
 E.A. CRENSHAW IN 1915
 (40' x 850') VOL 40 / Pg 173